



Cut-blocks, headwaters Oldman R. Basin, north of Crowsnest Pass, 2007

SRD Schedules
Beaver Mines Lake / Castle Falls Area
For Clear-Cut Logging

Sustainable Resource Development has scheduled an estimated 3,750 truckloads of logs to come from clear-cutting the middle of the Castle Special Place in the headwaters of southern Alberta. Plus, there will be additional logging in the Castle during the next 10 years, including in Mill, Whitney and Gladstone valleys. Operations have begun (e.g. flagging the blocks to cut) with cutting to start winter 2011-12 or possibly sooner.

This clear-cutting is scheduled despite:

- No pine beetle outbreak in the Castle and it being at low risk of a future outbreak from this native Rocky Mountain beetle.
- The Alberta Government adding the Castle Special Place (Castle Special Management Area) to "*Alberta's protected areas network*" as "*a milestone in the preservation of Alberta's natural heritage for future generations*" (1998).
- The Castle Special Place providing an unsurpassed 1/3 of the annual water flow for most of southern Alberta; specifically for the water stressed, Oldman River Basin and its 70 municipalities, including Lethbridge.

And despite:

- All major fires (>2 sq km in size) in the Castle since 1936 having occurred in the most logged area (Carbondale area).
- Current watershed planning under Water for Life and land-use planning under the Land Use Framework for all of southern Alberta. Planning that is not finished.
- The 1985 land-use plan setting watershed protection, recreation and tourism as the "priorities" for this southern part of the Crowsnest Forest, including what later became the Castle Special Place protected area.

Logs will be trucked more than three hours north to Spray Lake Sawmill in Cochrane, west of Calgary. That company is scheduled to do the logging and some of their recent logging can be seen at the foot of Crowsnest Mountain, Crowsnest Pass.

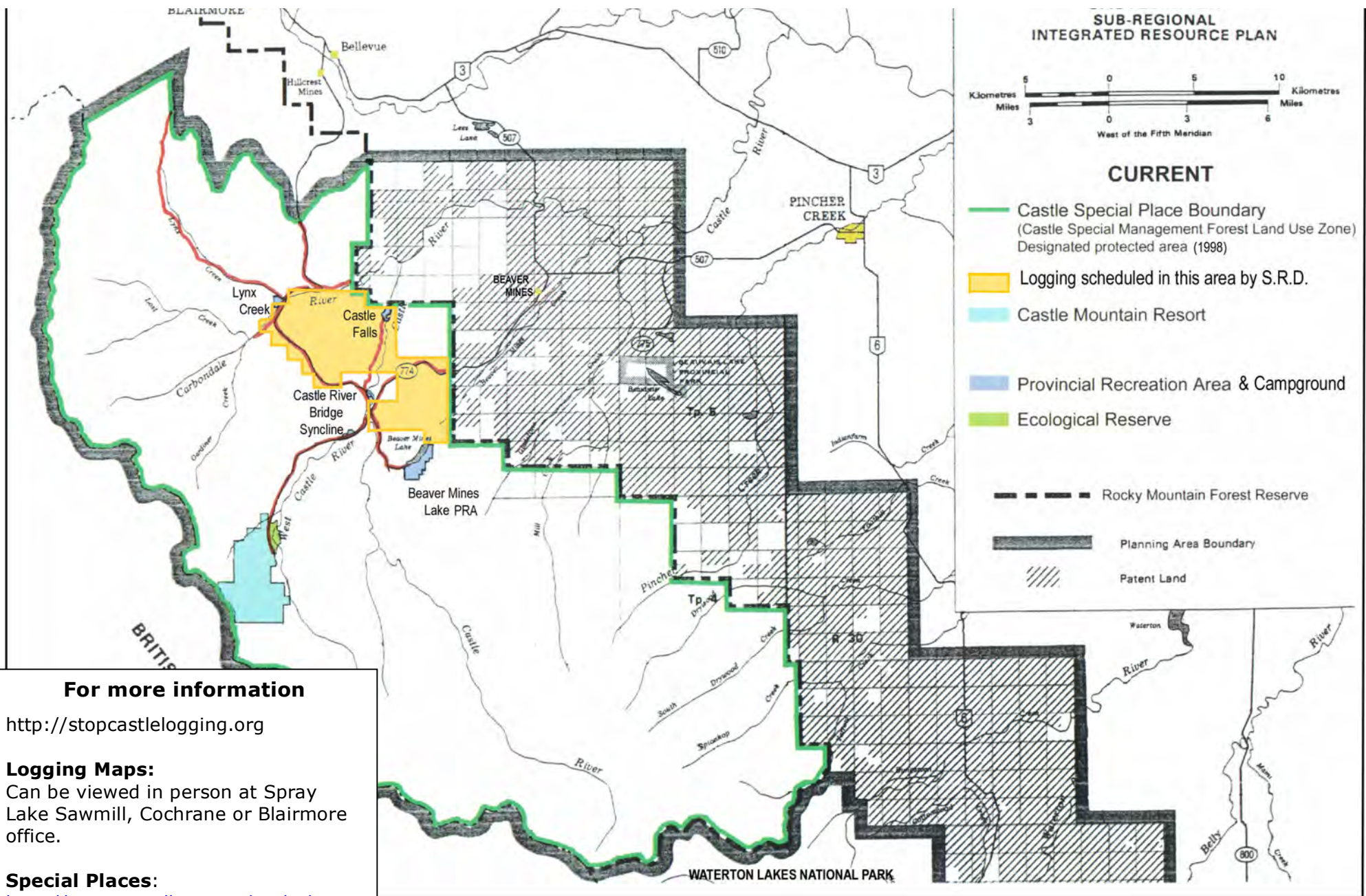
Public Consultation?

SRD didn't seek public input prior to scheduling logging inside this "protected area" – public land depended upon for water, multiple types of outdoor recreation, wildlife habitat & grazing.

SRD did have a public advisory committee in 2005-06, while drafting the C5 Forest Management Plan for the whole Crowsnest Forest (south boundary Kananaskis Country to Waterton Lakes National Park); the plan which the committee had a number of serious, outstanding concerns about (April & May 2006 CROWPAC letters to SRD Minister & local papers).

Concerned? Contact

<p>Honourable Mel Knight Minister of Sustainable Resource Development Alberta Legislature Building 10800 – 97 Avenue Edmonton, AB T5K 2B6 Phone: 780 415-4815 Email: srd.minister@gov.ab.ca</p>	<p>Mr. Evan Berger MLA for Livingstone-Macleod P.O. Box 69 Fort Macleod, AB T0L 0Z0 Phone: 403 553-2400 Email: livingstone.macleod@assembly.ab.ca</p>
<p>Please send copy of your letter to Honourable Cindy Ady, Tourism, Parks & Recreation Minister, Alberta Legislature Building, 10800 – 97 Avenue, Edmonton, AB T5K 2B6 Email: tnr.minister@gov.ab.ca Phone: 780 427-4928</p>	



For more information

<http://stopcastlelogging.org>

Logging Maps:

Can be viewed in person at Spray Lake Sawmill, Cochrane or Blairmore office.

Special Places:

<http://www.tpr.alberta.ca/parks/management/establishing.asp#special>

Protected Area Decision:

http://www.castlespecialplace.ca/castle_special_place_conceptual_proposal.pdf#page=43